

# What's New in VeraLab 9.5.0

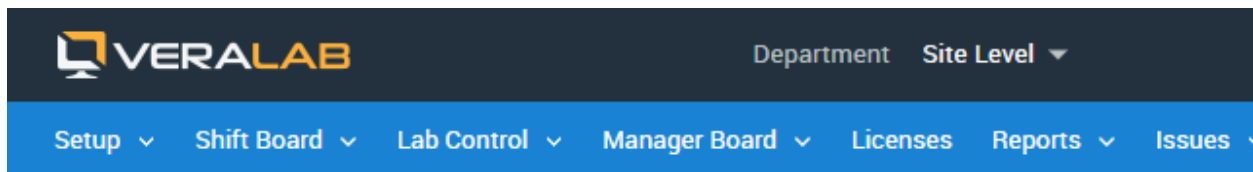
---

*Release Date: 05 December 2025*

## Enhancements and Updates

VeraLab version 9.5.0 comes with the following enhancements and fixes.

- Upgraded from Tomcat 9 to Tomcat 11 (Jakarta Servlet). This release includes an embedded JDK 21 and supports an upgrade to JDK 25 LTS if required. JDK 25 will be included in a future major release.
- Consolidated LDAP and SSO accounts. Enabling SSO disables LDAP, and vice versa. Sample setup is described in the [VERALAB SSO Integration with Microsoft Azure SAML](#) guide.



## Single Sign-on Settings

Please note: Enabling Single Sign-On (SSO) will deactivate the ability to log into the web application via LDAP. All current LDAP accounts will be automatically converted to SSO accounts and will only be usable through the Single Sign-On mechanism. Conversely, disabling Single Sign-On will convert all SSO accounts back to LDAP accounts.

Set sign-on options for users accessing VeraLab

Enable Single Sign-on

Authentication protocol \*

SAML

SAML Settings

- Certificates validation in SSO setup.

## SAML Authentication Settings

To ensure the correct functioning of Single Sign-On, it is necessary to enable HTTPS support. Additionally, you must specify the hostname and HTTPS port on which VeraLab is operating. Responses from the authentication server will be redirected to this address.

Hostname *	<input type="text" value="192.168.184.1"/>
Port *	<input type="text" value="8443"/>

## Identity provider (IdP) Settings

### [Import Settings from IdP Metadata](#)

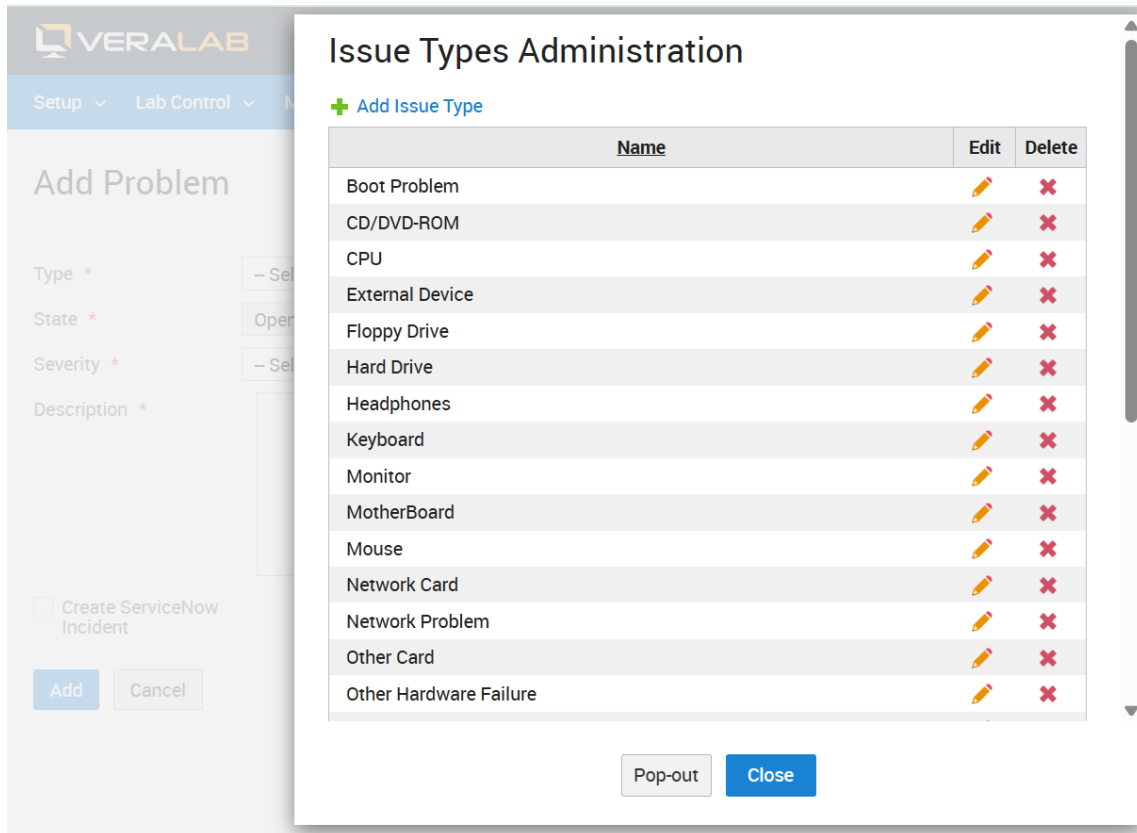
Identifier of the IdP entity (must be a URI) *	<input type="text" value="http://XDC.xen-test.local/adfs/services/trust"/>
SSO endpoint info of the IdP *	<input type="text" value="https://xdc.xen-test.local/adfs/ls/"/>
Single Logout endpoint of the IdP	<input type="text" value="https://xdc.xen-test.local/adfs/ls/"/>

### IdP certificate(s) \*

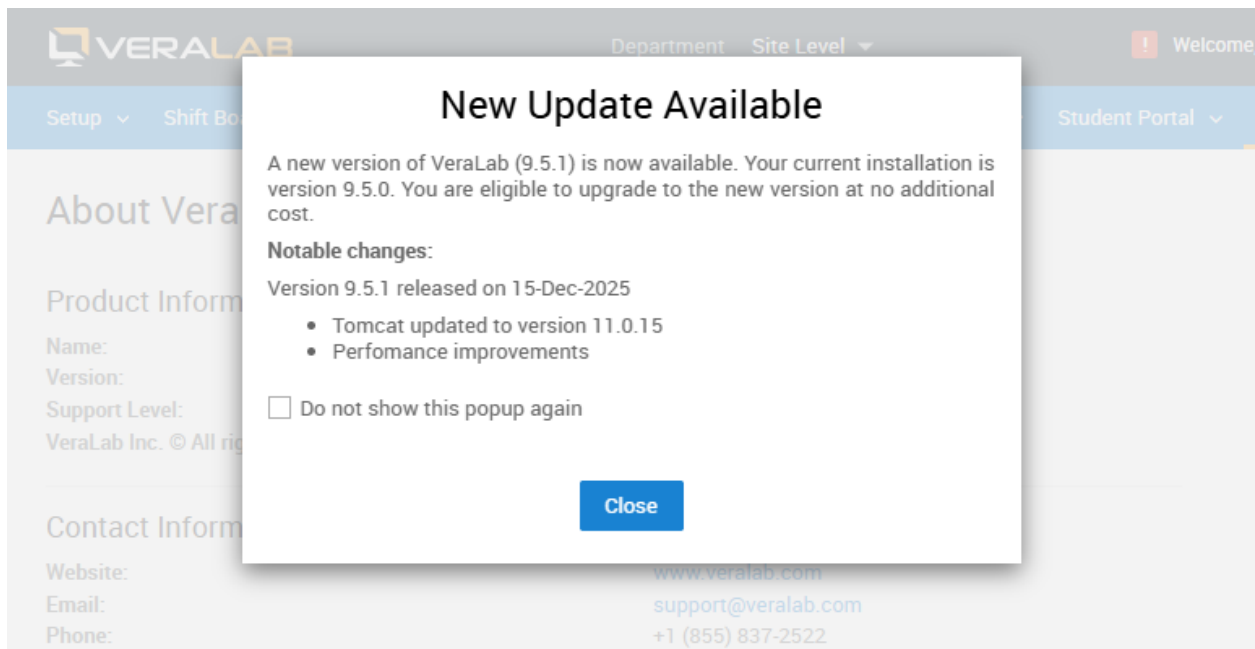
```
MIIC5jCCAc6gAwIBAgIQdVxYiDZoXrZKn4pWxDC2BzANBgkqhkiG9w0BAQsFADAvMS0wKwYDVQQDEyRBREZTIEVU
Y3J5cHRpb24gLSBYREMueGVuLXRlc3QubG9jYWwwHhcNMjQwOTMwMDIxMjEyWhcNMjUwOTMwMDIxMjEyWjAv
MS0wKwYDVQQDEyRBREZTIEVUy3J5cHRpb24gLSBYREMueGVuLXRlc3QubG9jYWwwggEiMA0GCsQGSib3DQEBA
QUAA4IBDwAwggEKAoIBAQcR9m1++JEZ2pNetrD9iOJAA44q5GjAzXv8vCjITNxyBFp5PQi8FxAIPyxnX4MtjSBbLQo
wculnPBbmoiR6JNkhhTmLznCqIviFMOFX+u2Il5ktBN0ruxyTn3t09z+T**KtGN5yGO5kxr4ZwBwfHqGE5xy6T+G1SjAq
vVc0vIMJHpwdLOf2Ff3vMCm3zkyxgA9ej6p5UkuZOZtu5FV1yRb3y4hyZ5XU0R9HlfyntFshoTYihQYBSfaoeJEXPMjz
E/Ma8sk/+Sd7hkLEGS+YN6Ao/uQSbiTMXJJluRfdKWXLqUfTHcHrWIVCLuZaugjQ953t4Z4jB2NQmZJYuw6Sne/lAg
MBAAEwDQYJKoZIhvcNAQELBQADggEBABDi6dl35CPgZ4bCv9bTrXDHpDotQsvKHhVOX8ZthoQt0HRoK79oQUdKGr
```

Invalid IdP certificate!

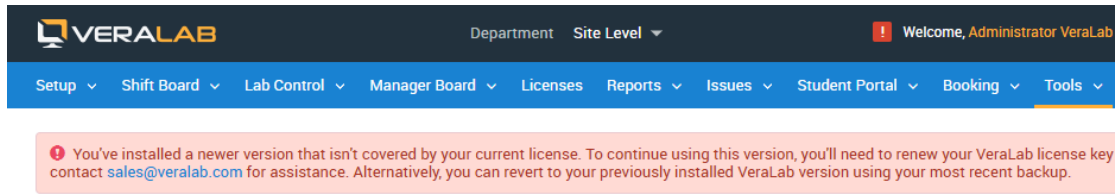
- Optimized LDAP authentication with shorter timeouts and additional retries in case of connection errors.
- You can now edit seeded Issue Types (add, remove, or modify existing types). In the Enterprise Edition, this is available only at the Site level. Go to **Open Issues** → **Add/Edit Problem**, then click the pencil icon next to the **Type** drop-down.



- VeraLab 9.5 includes a built-in version monitor. When a new version is published, users will see an alert in the web application and can review the release highlights.



- VeraLab 9.5 includes stricter product license validation. Customers with Basic Support or an expired Extended Support license must obtain a new license key before installing updates. New clients will not be compatible with older version of the server when there is a license conflict.



## About VeraLab

### Product Information

Name:	VeraLab Enterprise Edition
Version:	9.5.0
Additional Modules:	Booking
Support Level:	Basic (Extended Support expired 31-Aug-2024)
VeraLab Inc. © All rights reserved.	

### Contact Information

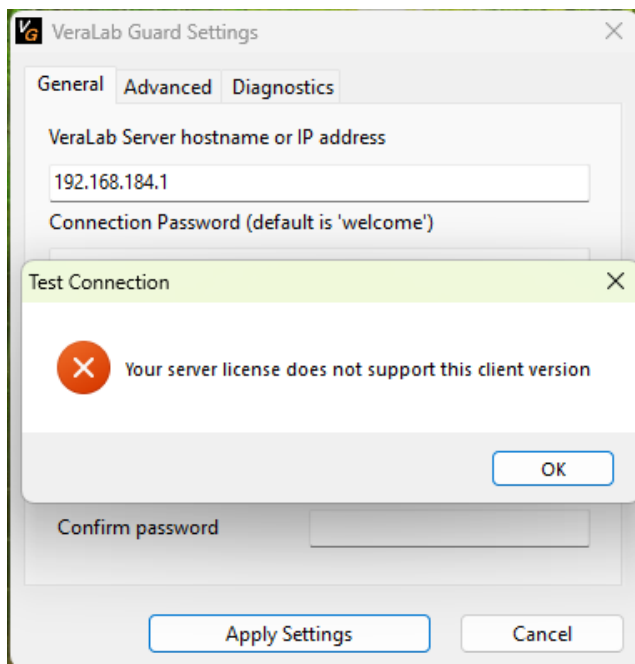
Website:	<a href="http://www.veralab.com">www.veralab.com</a>
Email:	<a href="mailto:support@veralab.com">support@veralab.com</a>
Phone:	+1 (855) 837-2522

### License Information

Organization Name:	Test Enterprise
Unlimited License	
Max. number of registered stations:	5000
Max. number of concurrently connected stations:	5000

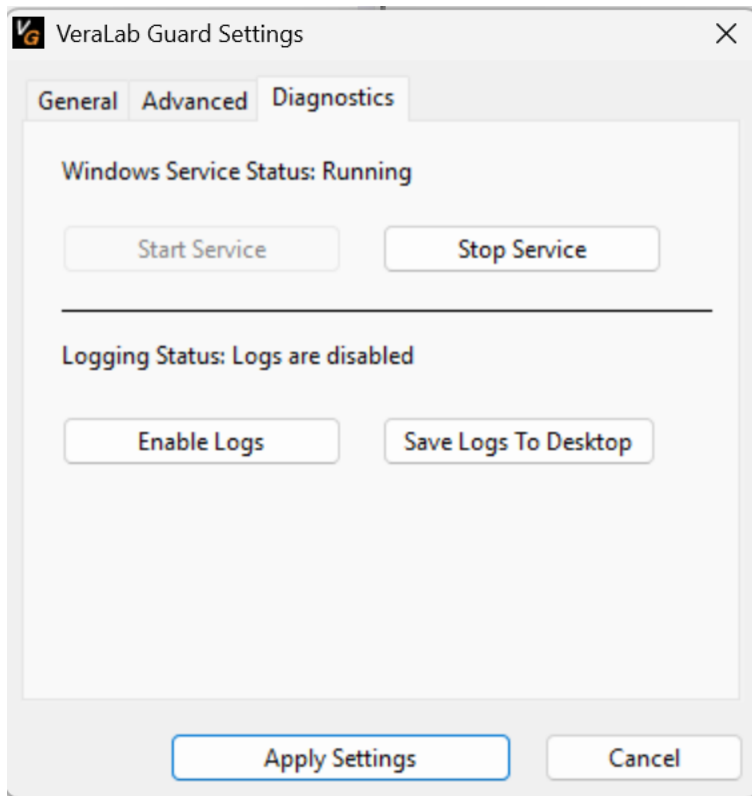
### Current License Terms

Current number of workstations:	409
---------------------------------	-----



## VeraLab Client 9.5 Enhancements

- Windows (PC) and macOS clients have a new **Diagnostics** tab in VeraLab Guard Manager. This functionality allows enabling and saving debug logs locally on the client.



## Tech Stack Updates

VeraLab version 9.5.0 comes embedded with the following updated tech stack components.

- Tomcat 11.0.14
- Updates across library dependencies.

## Bug Fixes

VeraLab version 9.5.0 includes minor bug fixes discovered in previous releases.

## Reporting a Bug

Found a bug? Please submit a bug to [support@veralab.com](mailto:support@veralab.com).

Thank you for using VeraLab and for taking the time to send us your feedback!